

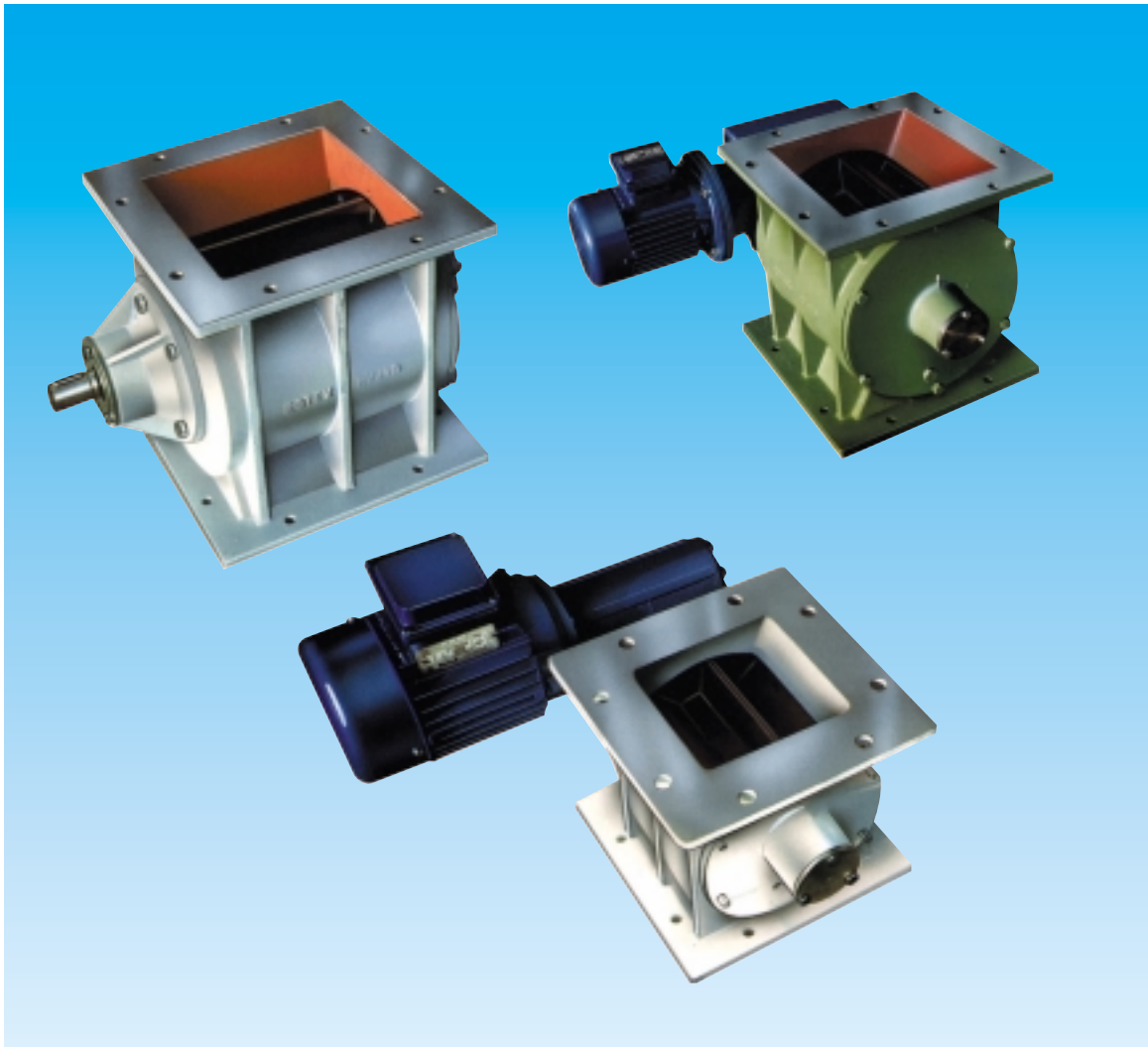


旋转阀

电话: 022-27336597
传真: 022-27272895

Internet: www.fluid-controls.cn/wam/

RV



旋转阀

ROTARY VALVES RV SERIES

RV 旋转阀的应用范围十分广阔。它是控制粉体或颗粒状固体装入料仓，料斗或离心分离器以及从这些设备中释放的理想工具，它坚固而紧凑的设计使我们能够很容易地取出它内部的工作部件。

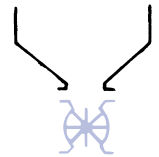
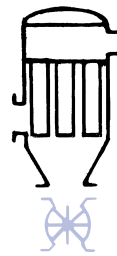
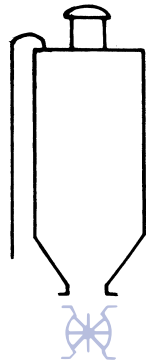
根据不同的流量要求，我们提供了各种不同的型号。

RV rotary valves have been designed for universal use. They are ideally suited to control delivery or discharge of powder or pelletized products to and from silos, hoppers, pneumatic conveying systems, bag filters and centrifugal separators.

Its strong and compact design makes it a simple matter to access the internal working parts.

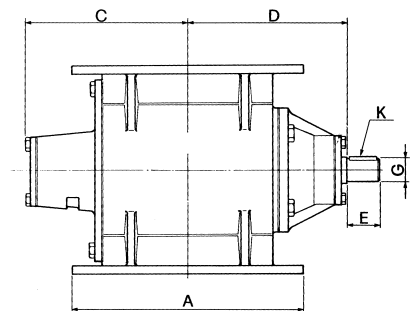
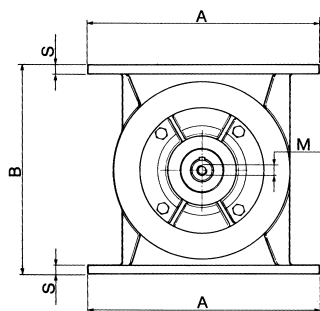
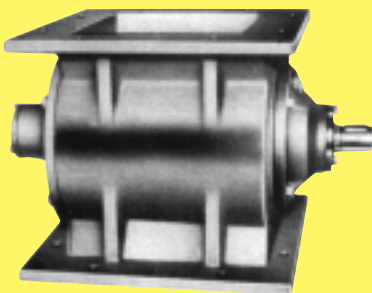
Different types are available according to the required flow rates.

型号 TYPE	RV2	RV5	RV10	RV20
升/转 LITRES PER REVOLUTION	2,2	5,4	10,9	19,5



裸阀

SIMPLE STEM VALVES

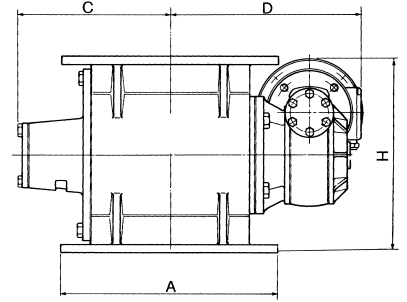
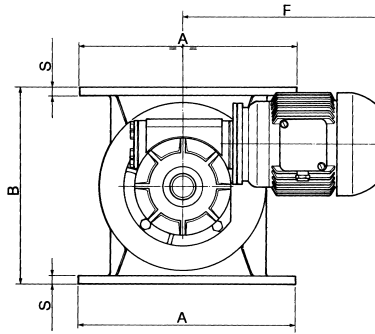
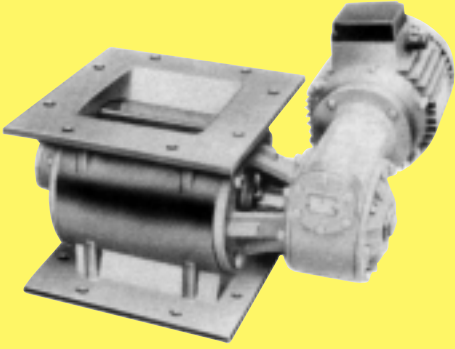


型号 TYPE	A	B	C	D	E	G	M	S	K	kg
RV2/AN	265	220	157	163	40	32 h7	8M	10	10 x 8 x 30	37
RV5/AN	320	280	205	200	40	32 h7	8M	13	10 x 8 x 30	52
RV10/AN	375	360	232	263	50	32 h7	8M	13	10 x 8 x 40	97
RV20/AN	440	455	275	290	50	32 h7	8M	15	10 x 8 x 40	155

尺寸 毫米 Dimensions in mm

配备马达的阀

VALVES WITH GEARED MOTORS



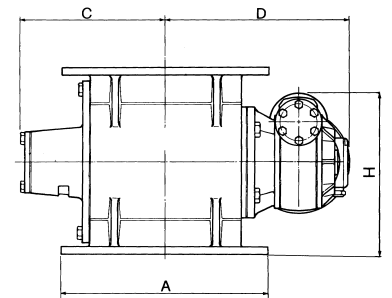
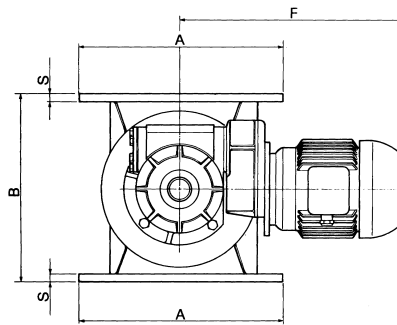
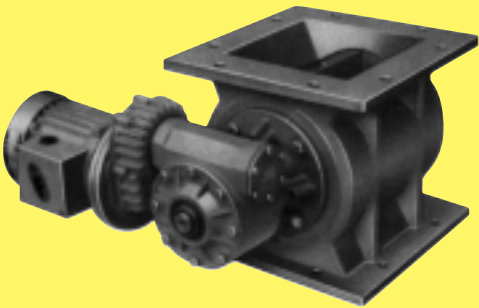
型号 TYPE	A mm	B mm	C mm	S mm	D* mm	F* mm	H* mm	电动马达		转子		重量 kg
								ELECTRIC MOTOR		ROTOR - ROTORE		
								额定功率 kW	转速 rpm	扭矩速 Nm	转速 rpm	
RV2 /30	265	220	157	10	345	340	276	0.5	1410	110	30	58
RV2 /20	265	220	157	10	345	340	276	0.5	930	155	20	58
RV5 /30	320	280	205	13	345	340	306	0.75	1410	150	30	73
RV5 /20	320	280	205	13	345	340	306	0.5	930	155	20	73
RV10 /30	375	360	233	13	402	375	372	1.1	1410	240	30	123
RV10 /20	375	360	233	13	402	375	372	0.75	940	250	20	123
RV20 /30	440	455	275	15	430	400	420	1.5	1410	320	30	181
RV20 /20	440	455	275	15	430	400	420	1.1	940	360	20	181

* 此尺寸参照配备标准驱动装置的阀

* The dimensions given refer to valves with standard drive

配备预扭矩装置的阀

POWERED VALVES WITH PRE-TORQUE



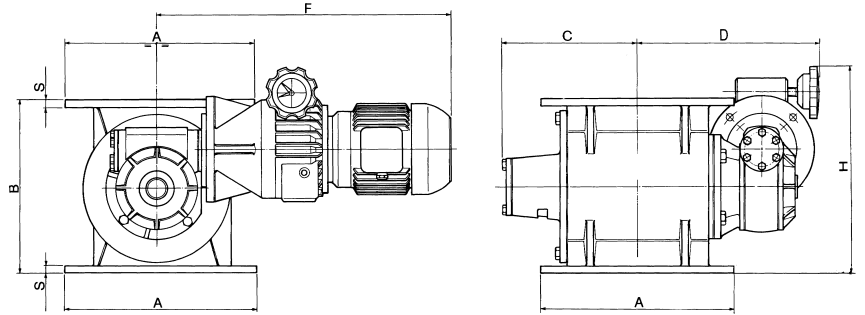
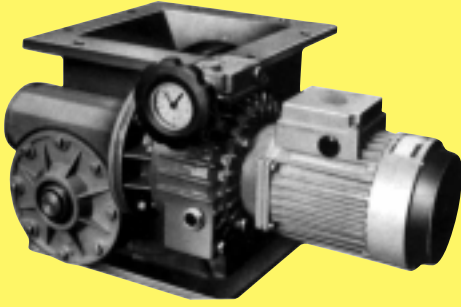
型号 TYPE	A mm	B mm	C mm	S mm	D* mm	F* mm	H* mm	电动马达		转子		重量 kg
								ELECTRIC MOTOR		ROTOR - ROTORE		
								额定功率 kW	转速 rpm	扭矩速 Nm	转速 rpm	
RV2 /10PC	265	220	157	10	315	325	237	0.37	1400	190	10	73
RV5 /10PC	320	280	205	13	315	325	267	0.37	1400	190	10	88
RV10 /10PC	375	360	233	13	380	387	325	0.5	1400	300	10	140
RV20 /10PC	440	455	275	15	410	410	372	0.75	1400	400	10	195

* 此尺寸参照配备标准驱动装置的阀

* The dimensions given refer to valves with standard drive

配备调速马达的阀

VALVES WITH VARIABLE SPEED MOTOR

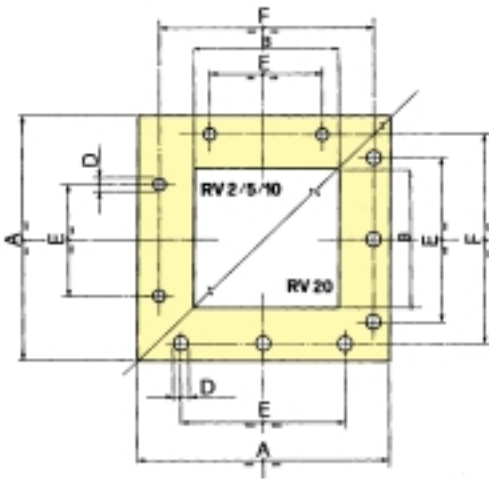


型号 TYPE	A mm	B mm	C mm	S mm	D* mm	F* mm	H* mm	电动马达		转子		重量 kg
								ELECTRIC MOTOR		ROTOR - ROTORE		
								额定功率 kW	转速 rpm	扭距速 Nm	转速 rpm	
RV2/V	265	220	157	10	326	475	310	0.37	190-1000	130-270	22-4	63
RV5/V	320	280	205	13	326	475	340	0.37	190-1000	130-270	22-4	78
RV10/V	375	360	233	13	397	562	427	0.75	190-1000	270-550	22-4	132
RV20/V	440	455	275	15	425	562	467	0.75	190-1000	270-550	22-4	185

* 此尺寸参照配备标准驱动装置的阀
* The dimensions given refer to valves with standard drive

进 / 出料口尺寸

INLET/OUTLET DIMENSIONS



型号 TYPE	A	B	D	E	F
RV2	265	150	14	120	225
RV5	320	200	14	150	280
RV10	375	250	14	180	335
RV20	440	300	18	260	400

尺寸 毫米 Dimensions in mm

选型

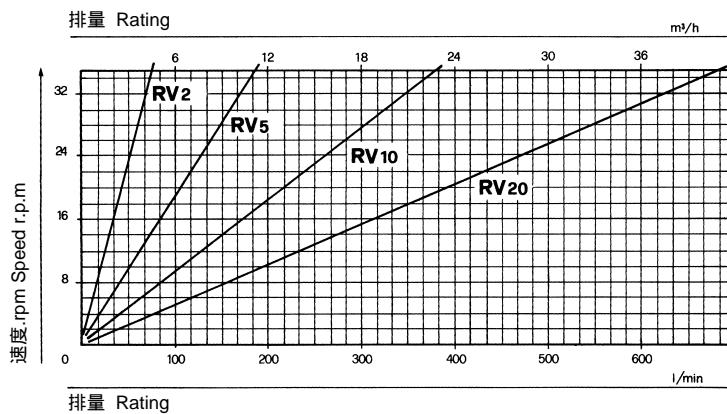
SIZING

下面的理论图表提供了一些选用阀门型号的准则。然而，试想一下，箱体负载会根据释放的物料类型和转速而变化。

这里提供了三种标准转速：10/20/30rpm。此外，产品还包括了从4至22rpm的调速范围。

The following theoretical diagram provides some general guidelines on the type of valve to be used. Bear in mind, however, that the box load will vary according to the type of material discharged and the rotational speed.

Three standard speeds are available: 10/20/30 rpm. In addition, the range will include a range variator from 4 to 22 rpm.



选型

虽然我们已提供了多种型号，但还是无法提供针对每种物料特性的图表。然而，我们在这里提供了一些重要数据使您很容易做出正确选择。

- 阀的箱体负载的粉尘或相似物料约占理论数值的80%时，及阀的转速为20rpm时，可达最佳状态。
- 低转速意味着低磨损，因此，当处理摩擦性强的物料时，最好选用大容量低转速的型号。
- 阀体结构所用材质根据处理的物料类型决定。

三种基本类型：

- 非沾染性物料：
阀体—灰色铸铁；阀盖—铸铁；转子—铸铁或钢
- 摩擦性物料
阀体—铸铁镀铬/镍；阀盖—铸铁镀铬/镍；转子—钢或铸铁带Vulkolan刮片。
- 腐蚀性物料
阀体—铸铁镀铬/镍；阀盖—铸铁镀铬/镍；转子—不锈钢。

SIZING

Given the variety of types, specific diagrams for every material have not been prepared. However, here are some essential data to make a correct choice easier:

- The box load for powder or similar material is more or less 80% of the theoretical value and optimum levels can be obtained with valve rotation at 20 rpm.
- Low valve rotation means low wear level, thus, if you are working with abrasive materials, it is better to use large capacity valves which run at low speed.
- The construction material depends on the type of material to handle.

There are three basic types:

- 1) Non-contaminating materials:** body - gray cast iron; covers - cast iron; rotor - cast iron or steel.
- 2) Abrasive products:** body - chromium or nickel plated cast iron; covers - chromium or nickel plated cast iron; rotor - steel or cast iron with Vulkolan scrapers.
- 3) Corrosive products:** body - chromium or nickel plated cast iron; covers - chromium or nickel plated cast iron; rotor - stainless steel.

定单代码

ORDER CODE

αα

ββ

χχ

δ

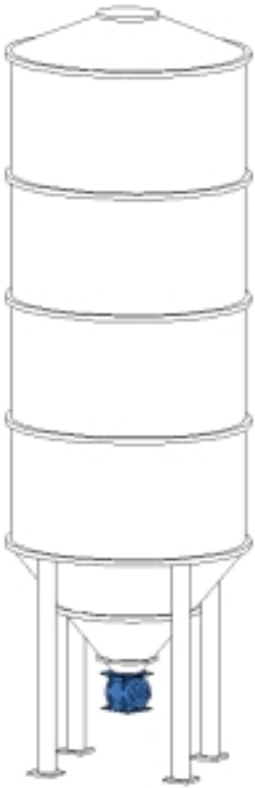
ε

φ

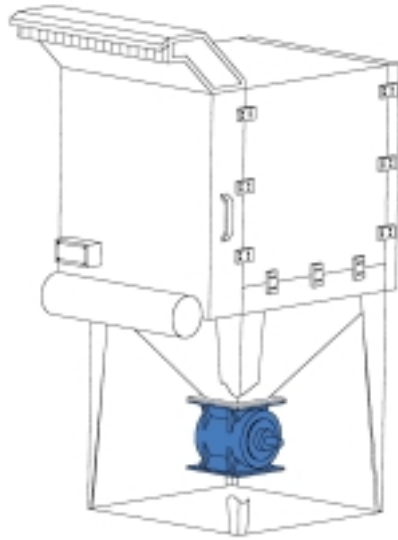
γ

η

αα	RV	旋转阀	Rotary valve
ββ	02 05 10 20	2升/RPM 5升/RPM 10升/RPM 20升/RPM	2 litres / RPM 5 litres / RPM 10 litres / RPM 20 litres / RPM
χχ	AN NC SM SR TC VM 10 20 30	裸轴 NEMA 标准齿轮传动装置 无马达 无齿轮传动装置 链转动 调速器 10RPM 20RPM 30RPM	bare shaft NEMA standards geared unit without motor without geared unit Chain drive speed variator 10 RPM 20 RPM 30 RPM
δ	1 2 3 4	铸铁 不锈钢304 铸铁封闭锥形排气 不锈钢304排气	cast iron Stainless Steel 304 cast iron with exhaust cones closed Stainless Steel 304 with exhaus cones closed
ε	A B C D E 0	Vulkolan 刮片 Viton刮片 阿莫尼克钢刮片 特氟隆刮片 不锈钢304刮片 无刮片	Vulkolan tips Viton tips armonic steel tips Teflon tips Stainless Steel 304 tips without tips
φ	A 0	耐高温密封 标准密封	high temperature seals standard seals
γ	A B C 0	镀铬阀体 外层特氟隆阀体 外层镀镍阀体 标准型	chrome plated body Teflon coated body nickel coated body standard
η	A B C D E F G H 0	凹槽叶片转子 高硬度叶片转子 特氟隆叶片转子 镀镍叶片转子 镀铬叶片转子 特氟隆叶片及堵塞式转子 堵塞式转子 不锈钢304转子 标准型	chamfered vane rotor hardened vane rotor Teflon vane rotor Nickel plated vane rotor Chromium plated vane rotor Teflon vane and choked rotor choked rotor Stainless Steel 304 rotor Standard



① 料仓出口
SILO VENT



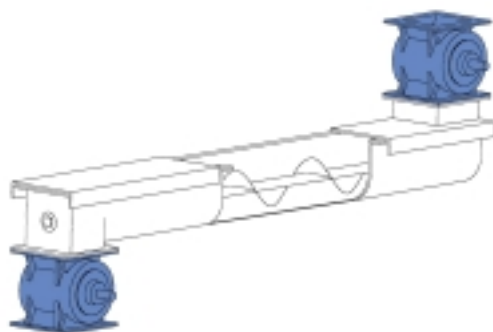
② 收尘机
DUST FILTERS



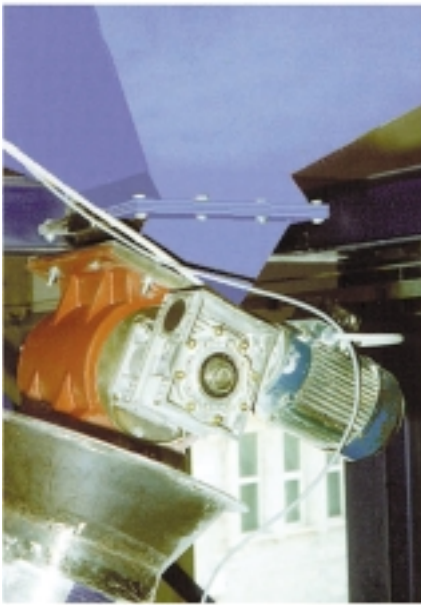
③ 大包装袋机
"BIG-BAG" FILLING STATIONS



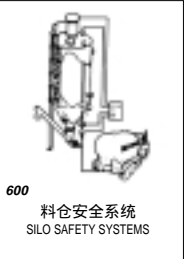
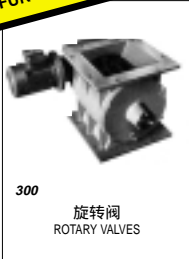
④ 软螺旋输送机
FLEXIBLE SPIRAL CONVEYORS



⑤ 螺旋输送机
SCREW CONVEYORS



其它产品
FURTHER PRODUCTS



注：保留修改技术规格的权利。

N.B.: Rights reserved to modify technical specifications.